

## NON-REBUILDABLE CALIPER CORES

CORE CREDIT **WILL NOT** BE ISSUED IF ANY OF THESE CONDITIONS EXIST

**1** SCARRED / CUT FROM WHEEL / ROTOR



**2** DAMAGED / STRIPPED INLET THREADS



**3** EXCESSIVE CORROSION / PITTED



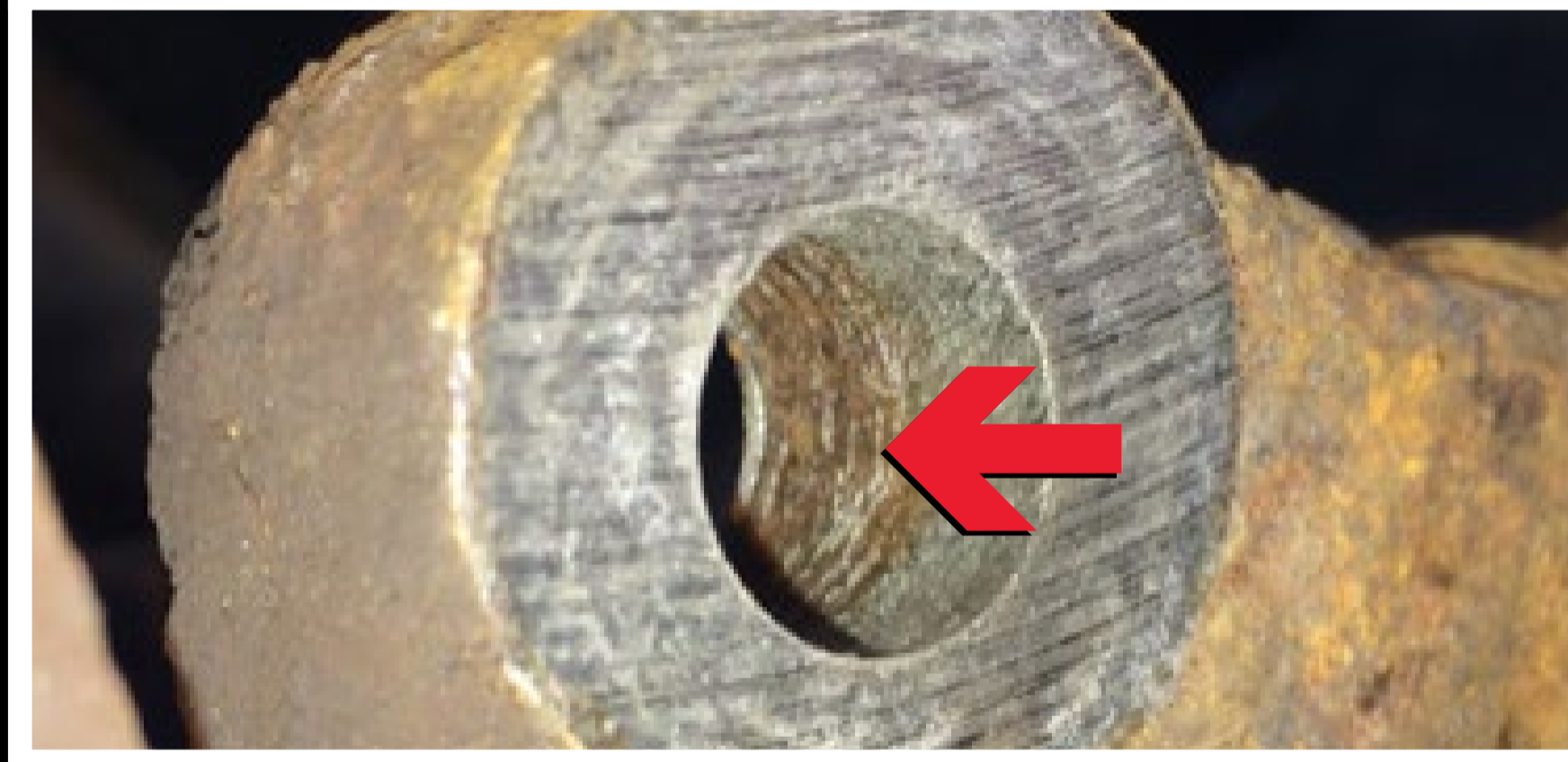
**4** BROKEN / DAMAGE / WORN EAR TABS



**5** BROKEN CALIPER BOLT / PIN



**6** DAMAGED MOUNTING BOLT THREADS



**7** MISSING EMERGENCY BRAKE LEVERS



**8** CRACKED OR BROKEN CASTING / BRACKET



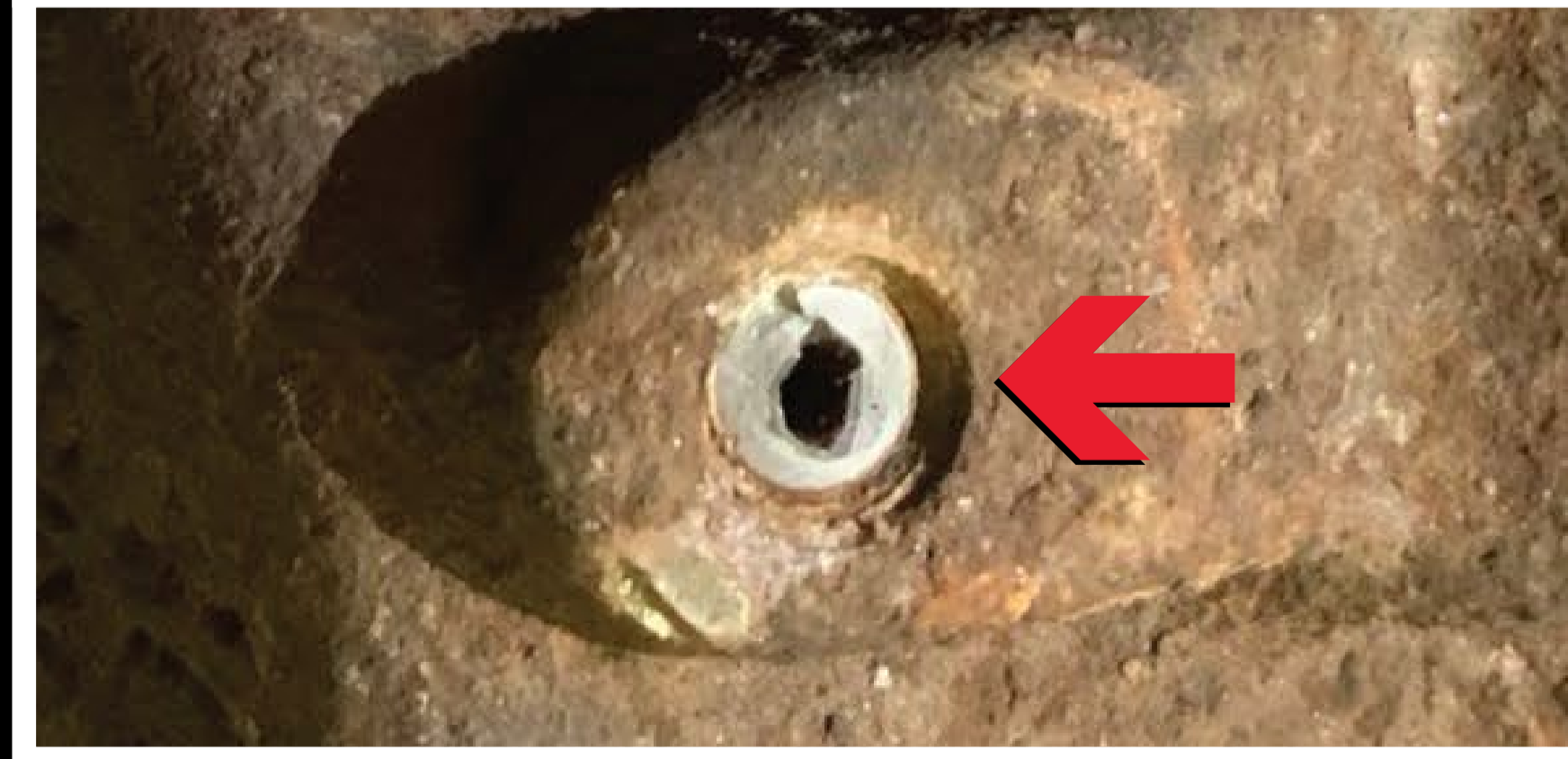
**9** MISSING OR DAMAGED BRACKET



**10** BLEEDER INLET MODIFIED / HELICOIL



**11** BROKEN / DRILLED BLEEDER SCREW



**12** UNBOXED: NO LABEL OR TAG

